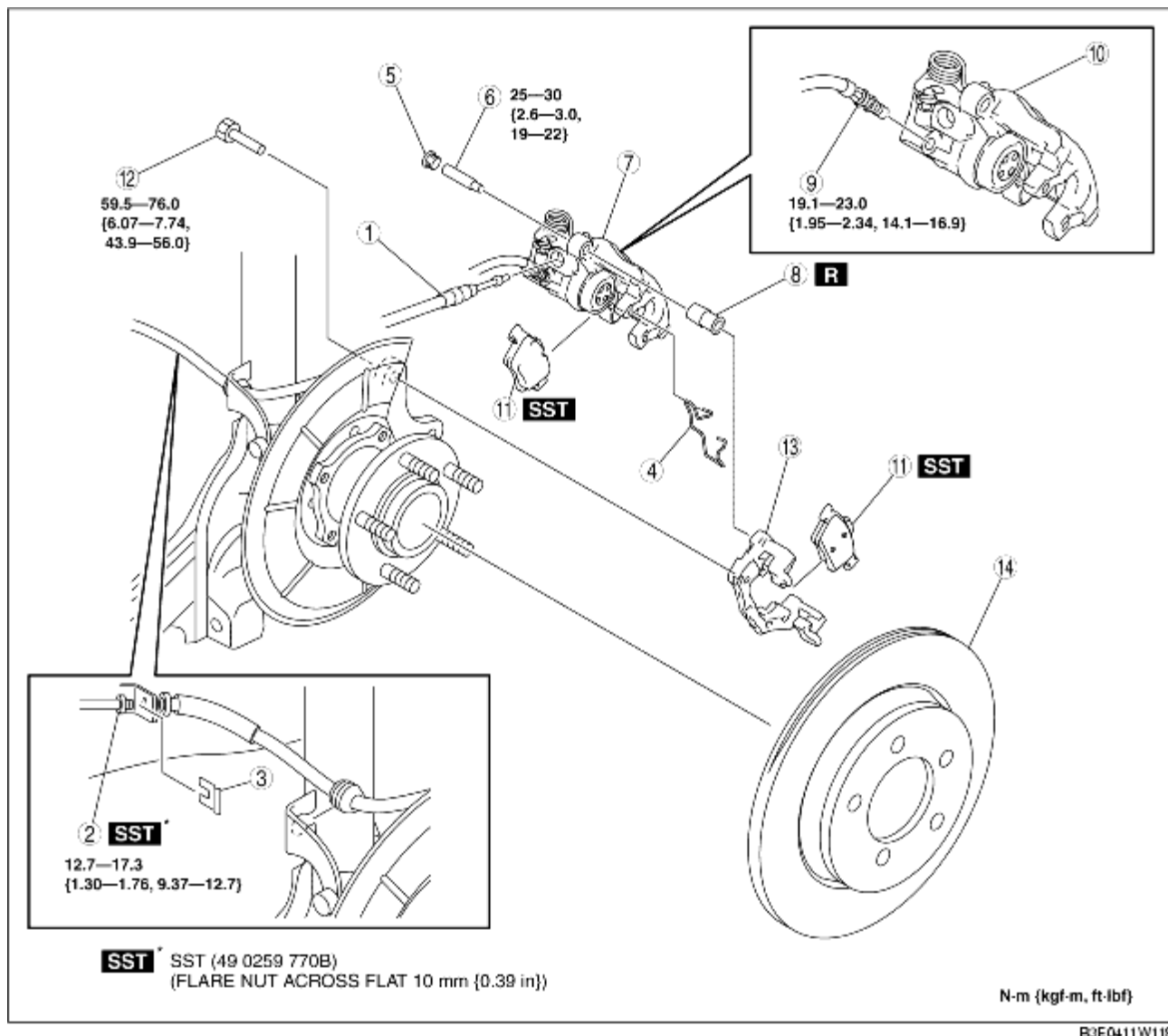


REAR BRAKE (DISC) REMOVAL/INSTALLATION

B3E041126980W04

1. Remove in the order indicated in the table.
2. Install in the reverse order of removal.
3. After installation, pump the brake pedal a few times and inspect the following:
 - Parking brake lever stroke
 - Brake drag

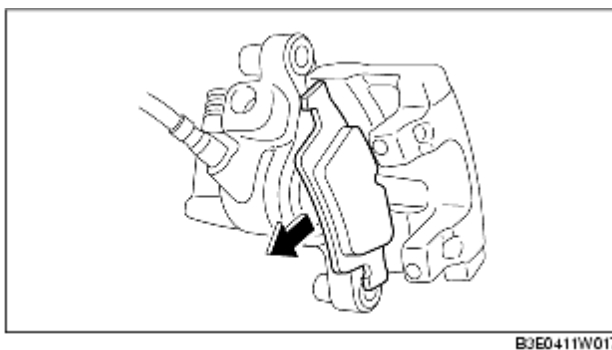


1	Parking brake cable
2	Brake pipe
3	Clip

4	Retaining clip
5	Cap
6	Bolt
7	Caliper, brake hose
8	Boot
9	Brake hose
10	Caliper
11	Disc pad (See Disc Pad Removal Note.) (See Disc Pad Installation Note.)
12	Bolt
13	Mounting support
14	Disc plate

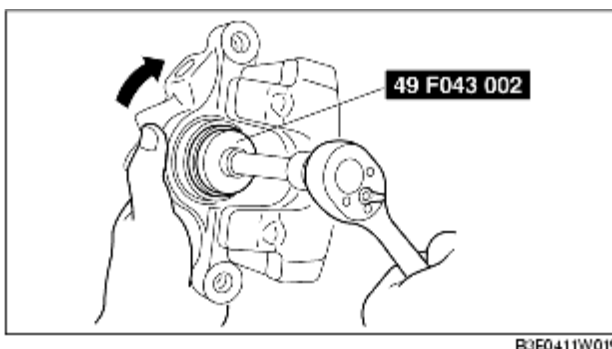
Disc Pad Removal Note

1. Remove the disc pad (outer side) from the mounting support.
2. Pull the disc pad (inner side) in the direction of the arrow to remove it from the caliper as shown in the figure.



Disc Pad Installation Note

1. Install the disc pad (outer side) to the mounting support.
2. Clean the exposed area of the piston.
3. Rotate the piston clockwise slowly using the **SST** and push the piston inwards completely.



4. Align the disc pad (inner side) spring into the piston groove, and insert it in the direction of the arrow.

5. Install the disc pad (inner side) to the caliper.